



SoftKinetic
The Interface is You

Strategic merger between Optrima NV (spin-off from the VUB created in 2009 within the Laboratory for Micro- & Photoelectronics (LAMI) of the Department of Electronics and Informatics (ETRO)) and SoftKinetic SA in 2011.

Milestones

- **July 2007:** SoftKinetic was born.
- **May 2009:** Foundation of Optrima.
- **September 2010:** SoftKinetic and Optrima announce strategic joint venture.
- **February 2011:** The group launches its vision with the strapline The Interface is You™.
- **September 2012:** Intel® selects SoftKinetic to power its Perceptual Computing initiative.
- **January 2013:** Collaboration with Texas Instruments to accelerate adoption of gesture control in TVs and PCs.
- **June 2013:** Agreement with Intel to license iisu®, SoftKinetic's industry-leading middleware for close-range gesture tracking.

SoftKinetic

Pleinlaan 15 | 1050 Brussels | Belgium

CEO: Michel Tombroff

[T] +32 (0)2 888 42 60

[E] info@softkinetic.com

[W] www.softkinetic.com



SoftKinetic® The interface is you™

SoftKinetic, a Belgium-based company, is the **leading provider of end-to-end natural gesture recognition solutions**. These include 3D CMOS Time-of-Flight (ToF) sensors, modules and cameras (DepthSense®), natural gesture recognition middleware (iisu®), and games and applications from SoftKinetic Studios.

SoftKinetic wants to give everyone the freedom to control, explore and enjoy the entire digital world through the most natural and intuitive user interfaces and machine interactions. The company partners with leading semiconductor companies, platform manufacturers, service providers, application developers, and research institutes to revolutionize the end-user experience in the professional and consumer electronics markets including PCs, laptops and Smart TVs.



Technology
Transfer
Interface
Brussels

Years of research & innovation

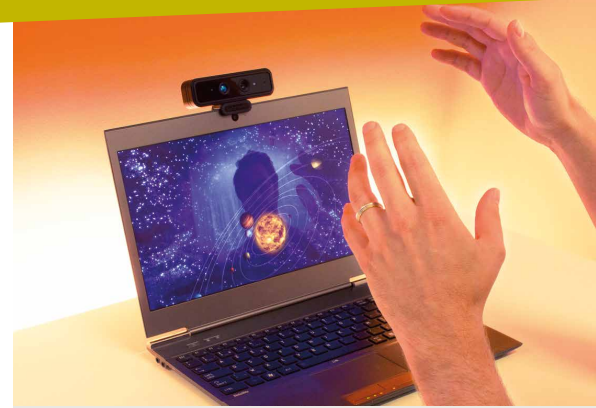
SoftKinetic was created by a merger between SoftKinetic and Optrima in 2011 after years of research and innovation.

- SoftKinetic SA was founded in July 2007 following five years of R&D by an expert team of mathematicians, 3D imaging specialists, software engineers and game enthusiasts. Their objective was to revolutionize the way people interact with digital content and interfaces.
- Optrima NV was founded in May 2009 following seven years of university research within the ETRO/LAMI* department of the VUB by a team of physicists, analog and digital designers, and image processing specialists. The team designed and developed 3D ToF sensors and cameras, allowing 3D gesture interfaces to be built.

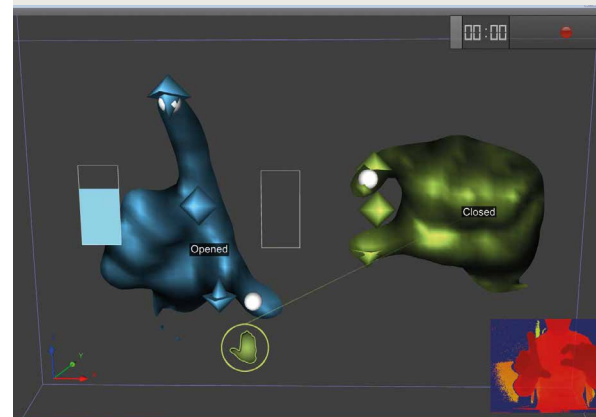
* Department Electronics and Informatics (ETRO) and the Laboratory for Micro- & Photonics (LAMI)

Strategic joint venture & merger

In September 2010, Optrima NV and SoftKinetic SA announced a strategic joint venture to offer the most complete 3D depth-sensing imaging and gesture recognition solution on the market. These businesses merged into SoftKinetic in February 2011 and moved into state-of-the-art facilities in Brussels. Since then, SoftKinetic has enjoyed significant success, growing steadily and building relationships with some of the most innovative brands in the digital world. With increased year-on-year sales, SoftKinetic is truly an entrepreneurial success story.



DepthSense® 325 camera for close interaction



iisu® SDK for natural gesture development and deployment

'Gesture-based interaction is becoming the de facto standard for delivering content across a wide variety of platforms and systems, and as the leader in the field we are proud to provide solutions that work for both close interaction and long range experiences.'

Michel Tombroff, CEO